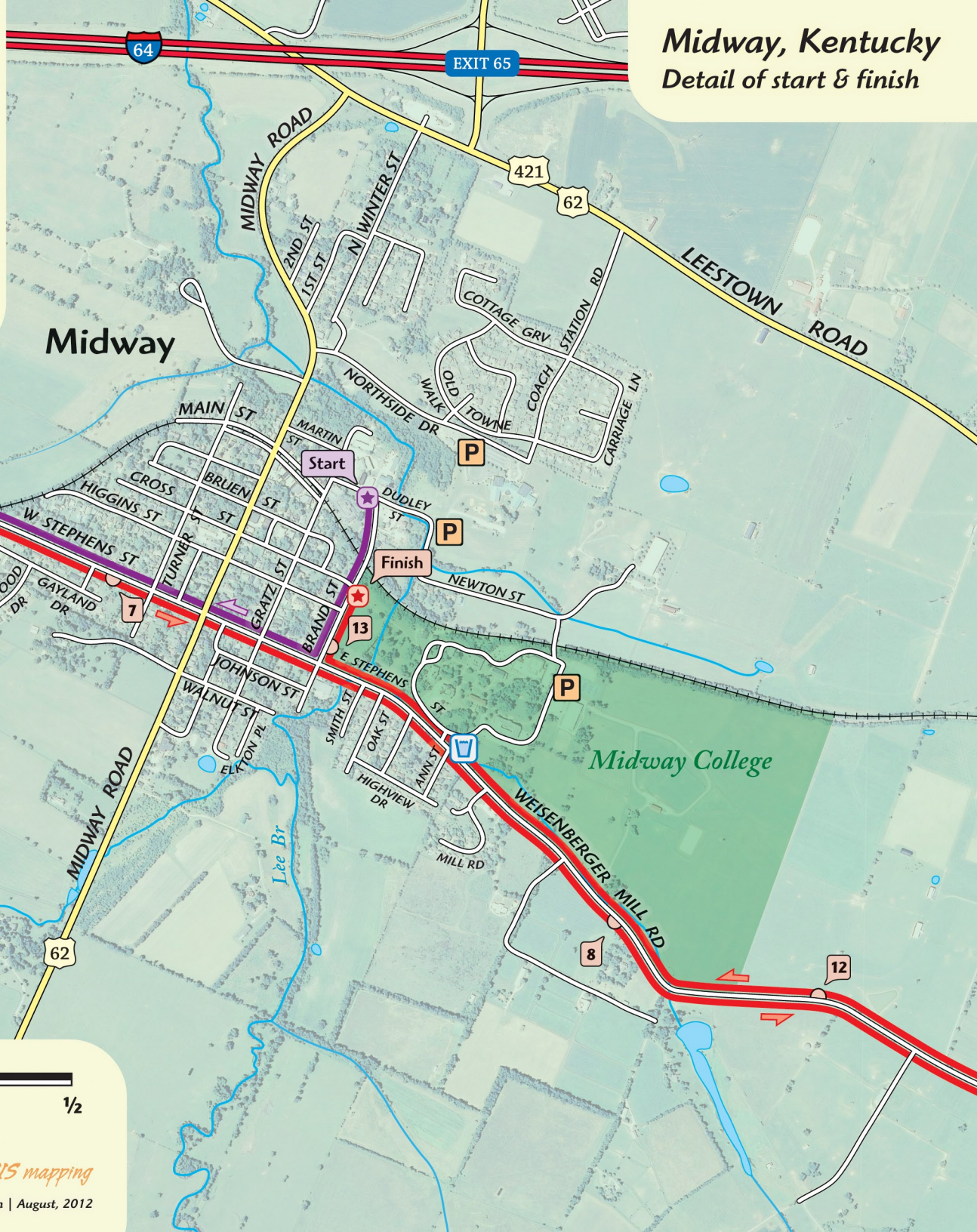


# Map Legend

- 1st half of course
- 2nd half of course
- Halfway point
- Direction of travel
- Start/Finish
- Direction of travel
- Aid & water station
- Direction of travel
- Event Parking
- Active Railroad

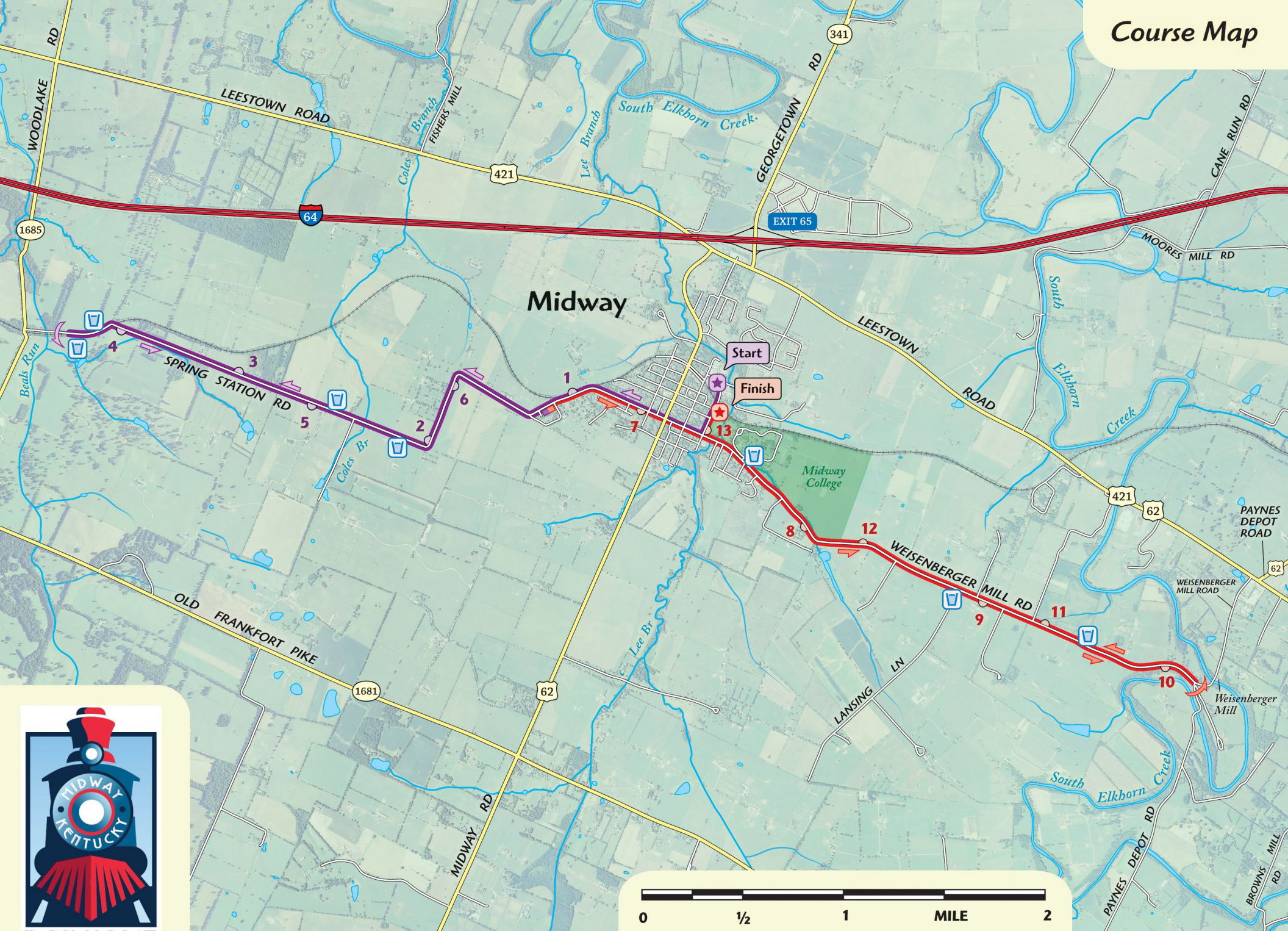


Midway, Kentucky  
Detail of start & finish





# Course Map



Elevation statistics: 107 feet of vertical relief with 831 feet of cumulative elevation gain.



outrageGIS mapping